

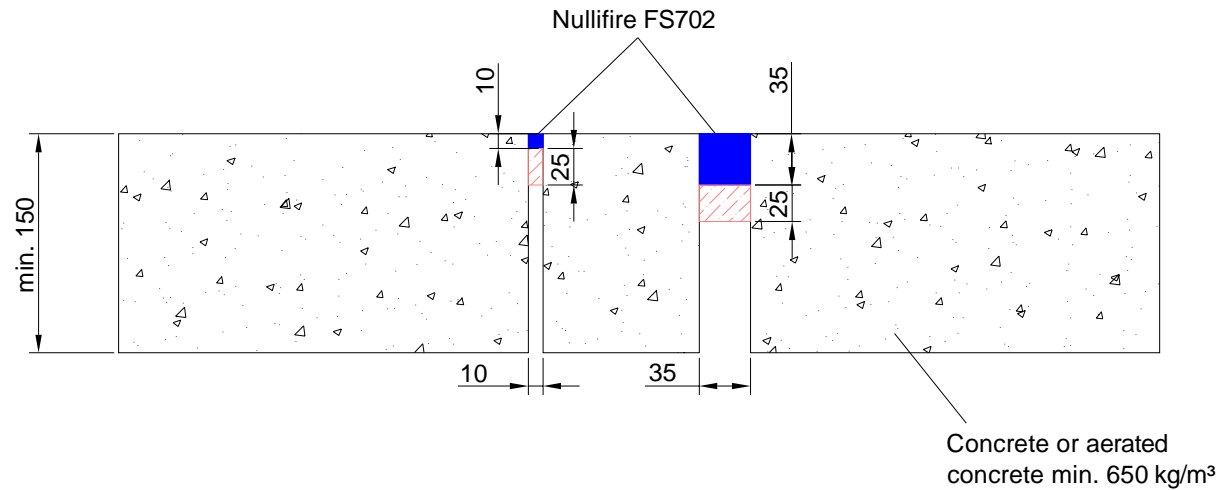
Nullifire Technical Drawings

FS702 Acrylic Sealant Linear Joints on Floors

Table of Contents

- ▶ Linear joint or gap seal, between floor slabs or between floor slab and wall (FP702-L1)
- ▶ Linear joint or gap seal, between floor slabs or between floor slab and wall with minimum thickness 300mm (FP702-L2)
- ▶ Linear joint or gap seal, between floor slabs or between floor slab and wall with sealant to the top face of the floor only (FP702-L3)
- ▶ Linear joint or gap seal, between floor slabs or between floor slab and wall with PE backing (FS702-L4a & FS702-L4b)

**Nullifire
FP702-L1**



APPROVAL:

ETA 17/0390

Tested joint or gap depth
Look at the table in this detail

FS702-L1
Fire class; Look at the table in this detail

Additional information ETA-approval/ Annex A.

Technical installation instructions need to be followed installing the products.

Nullifire FS702 to the top face of the floor, joint widths up to 35 mm

Joint or gap depth (mm)	Fire class	Backing
min. 10	EI240 -V-X-F-W10	25 mm deep stone wool, mineral fibre
min. 35	EI120 -H-X-F-W35	64kg/m ³ , compressed by 30%

THE CONTENTS OF THE DRAWING
Linear joint or gap seal, between floor slabs or between floor slab and wall

DESIGNER

REV

DATE
11.10.2018

SCALE
Not scaled

DETAIL MARK
FS702-L1

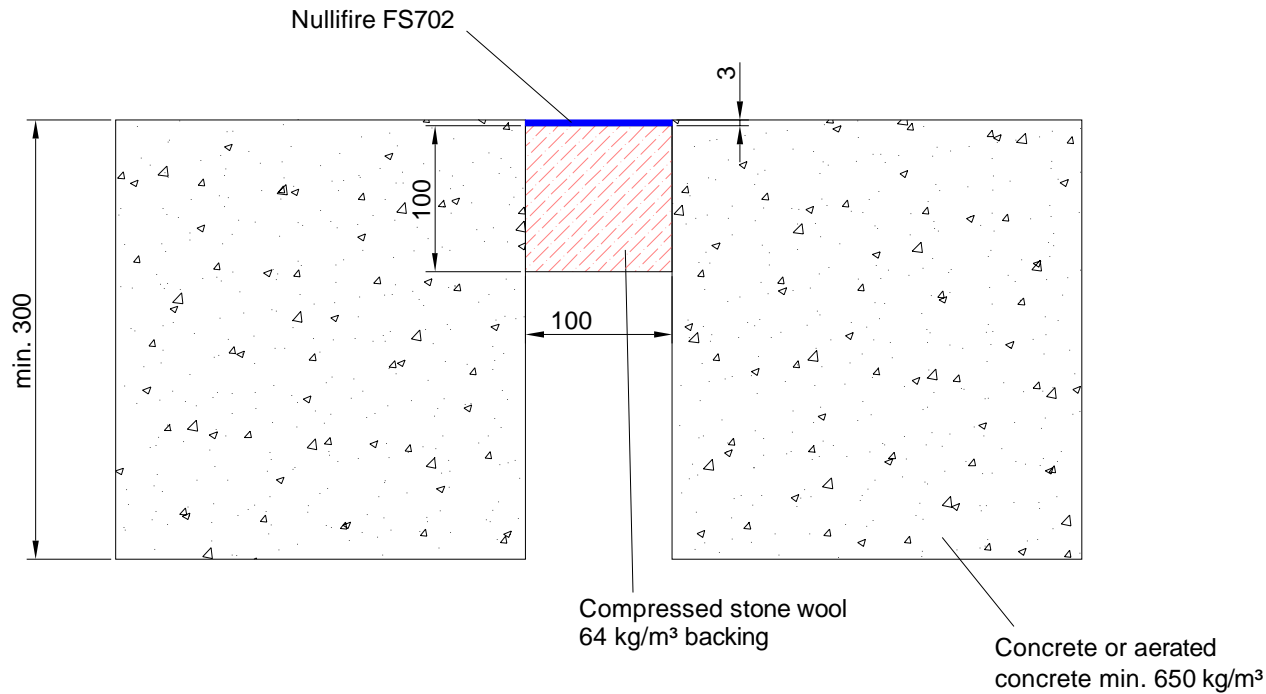
Nullifire has provided this specification on the basis of the data and information given to Nullifire by the customer, the Nullifire product information and level of technical knowledge this specification relates to is expected to provide the level of fire performance, should the proposed detail be subjected to the standardised fire resistance performance against which the judgment has been made.

- The accuracy of this specification relies on the following:
1. Only Nullifire products as defined in the specification are used.
 2. The specific products are installed by a competent person, utilising Nullifire installation manual and data sheets noting limitations.
 3. The proposed specification has been checked by the user.
 4. For Details on CE Marked Products Refer to the CE Technical Data Sheets.

SEAL OF APPROVAL MUST BE VERIFIED IF THIS DOCUMENT HAS BEEN MODIFIED

Nullifire

**Nullifire
FP702-L2**



APPROVAL:

ETA 17/0390

Tested joint or gap depth
Look at the table in this detail

FS702-L2
Fire class; Look at the table in this detail

Additional information ETA-approval/ Annex A.

Technical installation instructions need to be followed installing the products.

Nullifire FS702 to the top face of the floor, joint widths up to 100 mm

Joint or gap depth (mm)	Fire class	Backing
min. 3	EI240 -H-X-F-W100	100mm deep stone wool, mineral fibre 64kg/m ³ , compressed by 30%

THE CONTENTS OF THE DRAWING

Linear joint or gap seal, between floor slabs or between floor slab and wall with minimum thickness 300mm

DESIGNER

REV

DATE

11.10.2018

SCALE

Not scaled

DETAIL MARK

FS702-L2

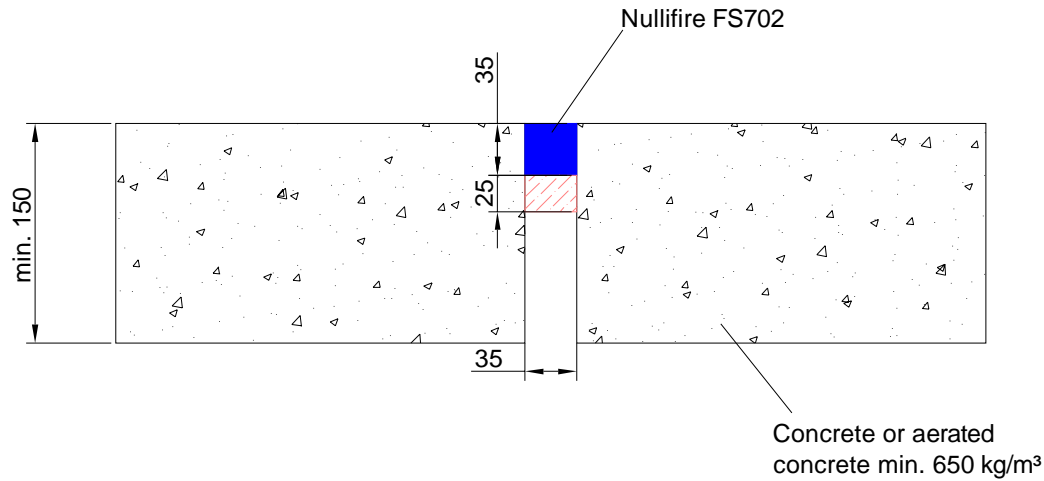
Nullifire has provided this specification on the basis of the data and information given to Nullifire by the customer, the Nullifire product information and level of technical knowledge this specification relates to is expected to provide the level of fire performance, should the proposed detail be subjected to the standardised fire resistance performance against which the judgment has been made.

- The accuracy of this specification relies on the following:
1. Only Nullifire products as defined in the specification are used.
 2. The specific products are installed by a competent person, utilising Nullifire installation manual and data sheets noting limitations.
 3. The proposed specification has been checked by the user.
 4. For Details on CE Marked Products Refer to the CE Technical Data Sheets.

SEAL OF APPROVAL MUST BE VERIFIED IF THIS DOCUMENT HAS BEEN MODIFIED

Nullifire

**Nullifire
FP702-L3**



APPROVAL:

ETA 17/0390

Tested joint or gap depth
Look at the table in this detail

FS702-L3
Fire class; Look at the table in this detail

Additional information ETA-approval/ Annex A.

Technical installation instructions need to be followed installing the products.

Nullifire FS702 to the top face of the floor, joint widths up to 35 mm

Joint or gap depth (mm)	Fire class	Backing
min. 35	EI240 -H-X-F-W35	25mm deep stone wool, mineral fibre 64kg/m ³ , compressed by 22%

THE CONTENTS OF THE DRAWING

Linear joint or gap seal, between floor slabs or between floor slab and wall with sealant to the top face of the floor only

DESIGNER

REV

DATE

11.10.2018

SCALE

Not scaled

DETAIL MARK

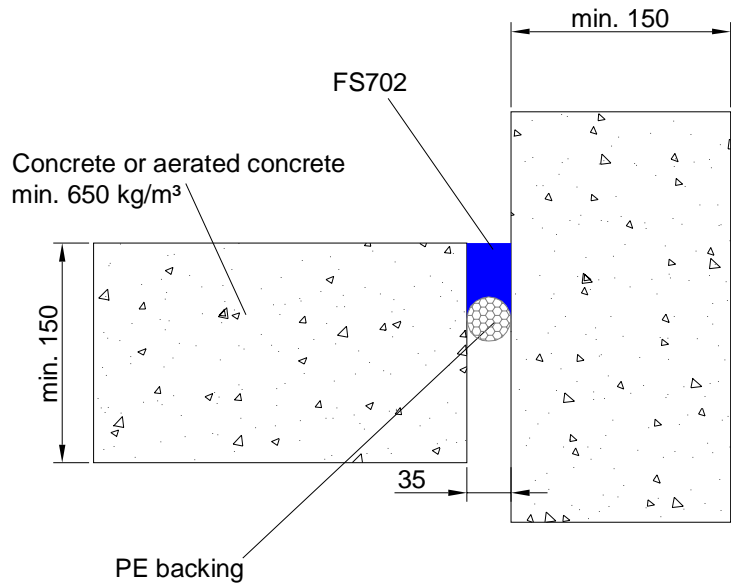
FS702-L3

Nullifire has provided this specification on the basis of the data and information given to Nullifire by the customer, the Nullifire product information and level of technical knowledge this specification relates to is expected to provide the level of fire performance, should the proposed detail be subjected to the standardised fire resistance performance against which the judgment has been made.

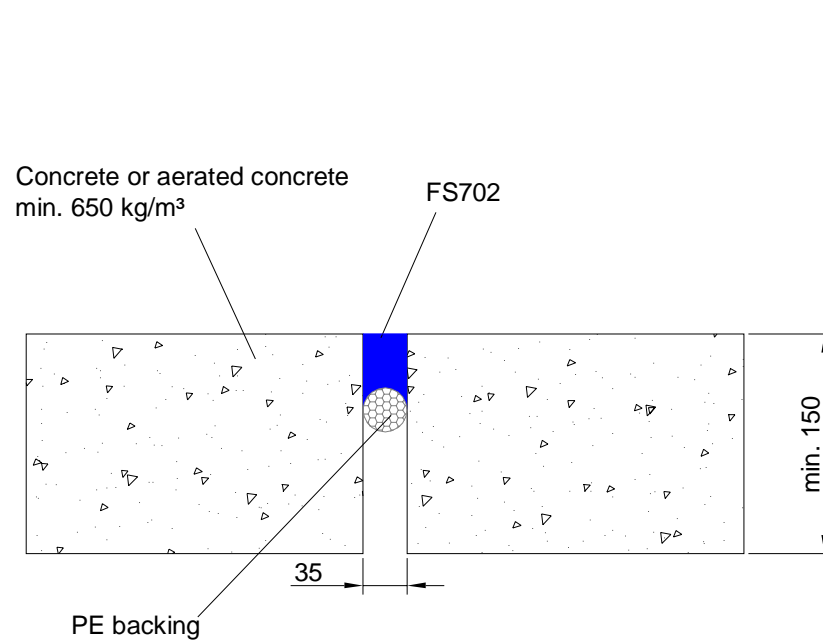
- The accuracy of this specification relies on the following:
1. Only Nullifire products as defined in the specification are used.
 2. The specific products are installed by a competent person, utilising Nullifire installation manual and data sheets noting limitations.
 3. The proposed specification has been checked by the user.
 4. For Details on CE Marked Products Refer to the CE Technical Data Sheets.

SEAL OF APPROVAL MUST BE VERIFIED IF THIS DOCUMENT HAS BEEN MODIFIED

**Nullifire
FS702-L4a
Between floor slab and wall**



**Nullifire
FS702-L4b
Between floor slabs**



APPROVAL:

ETA 17/0390

Tested joint or gap depth
Look at the table in this detail

FS702-L4
Fire class; Look at the table in
this detail

Additional information ETA-
approval/ Annex A.

Technical installation
instructions need to be followed
installing the products.

Nullifire FS702 to the top face of the floor, joint
widths up to 35 mm

Substrate	Depth	Fire class	Backing
masonry / concrete	30mm	EI120 -H-X-F-W35	PE rod
	50mm	EI240 -H-X-F-W35	
masonry / concrete / steel	30mm	EI30 -H-X-F-W35	
	50mm	EI45 -H-X-F-W35	
masonry / concrete / timber	30mm	EI90 -H-X-F-W35	
	50mm	EI180 -H-X-F-W35	

THE CONTENTS OF THE DRAWING

Linear joint or gap seal, between floor slabs or between
floor slab and wall with PE backing

DESIGNER

REV

DATE

11.10.2018

SCALE

Not scaled

DETAIL MARK

FS702-L4

Nullifire has provided this specification on the basis of the data and information
given to Nullifire by the customer, the Nullifire product information and level of
technical knowledge this specification relates to is expected to provide the level of
fire performance, should the proposed detail be subjected to the standardised fire
resistance performance against which the judgment has been made.

The accuracy of this specification relies on the following:
1. Only Nullifire products as defined in the specification are used.
2. The specific products are installed by a competent person, utilising Nullifire
installation manual and data sheets noting limitations.
3. The proposed specification has been checked by the user.
4. For Details on CE Marked Products Refer to the CE Technical Data Sheets.

SEAL OF APPROVAL MUST BE VERIFIED IF THIS DOCUMENT HAS BEEN MODIFIED

Nullifire