

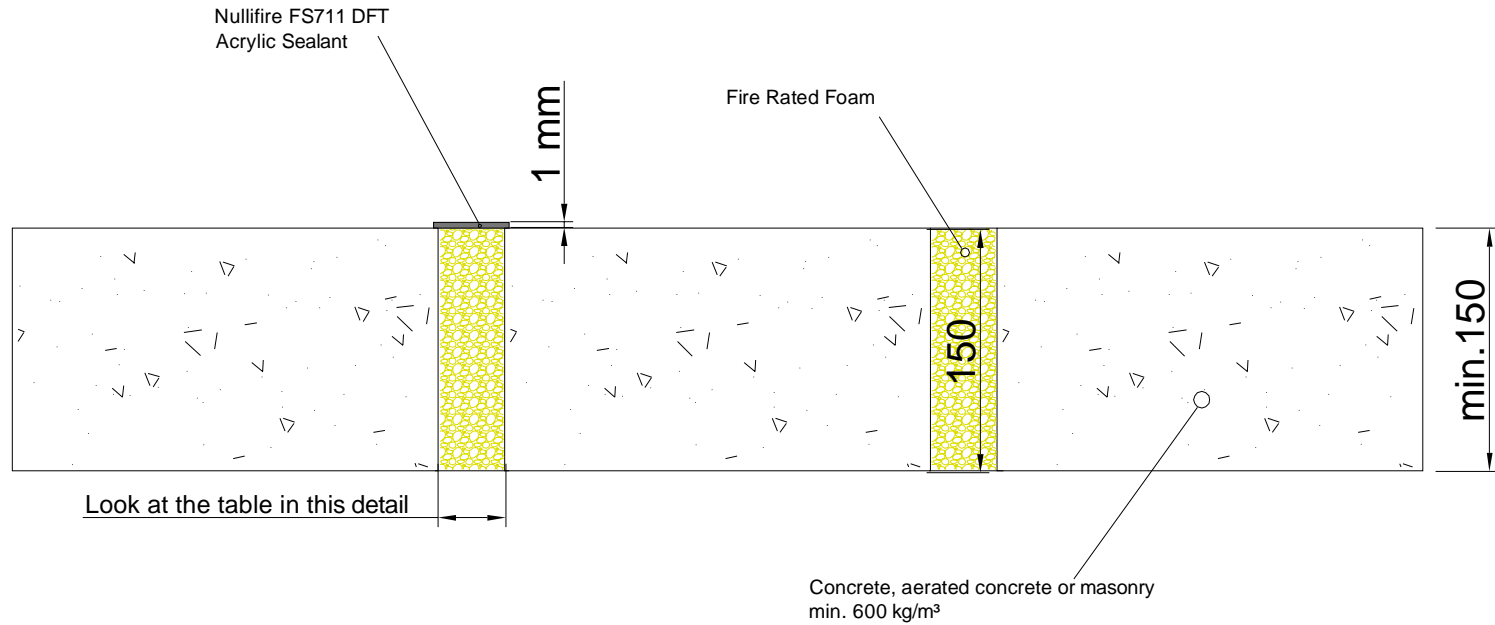
Nullifire Technical Drawings

Nullifire FF170 / FF177 / FF197 Fire Rated PU Foam Linear Joints

Table of Contents

- ▶ Linear joint or gap seal, horizontally orientated in a rigid floor construction (FF-SAL1)
- ▶ Linear joint or gap seal, vertically orientated in a rigid wall construction (FF-SAS1)
- ▶ Linear joint or gap seal, vertically orientated in a minimum 100 mm rigid wall construction (FF-SAS2)
- ▶ Linear joint or gap seal, vertically orientated in a minimum 100 mm rigid wall construction (FF-SAS3)

**Nullifire
FF-SAL1**



APPROVAL:

ETA 15/0172
 Nullifire FF170 foam
 Nullifire FF177 foam
 Nullifire FF197 foam

ETA 14/0113
 Nullifire FS711
 acrylic sealant

FF-SAL1
 Fire class; Look at the table
 in this detail

Technical installation
 instructions need to be followed
 installing the products.

Linear joint or gap seal, horizontally orientated

Subrates	Foam depth x gap width	Coating	Fire class
Concrete-Concrete	150 mm x max. 30 mm	-	EI90
Concrete-Concrete	150 mm x max. 5 mm	-	EI240
Concrete-Concrete	150 mm x max. 5 mm	Nullifire FS711 1mm acrylic sealant	EI240
Concrete-Concrete	150 mm x max. 40 mm	Nullifire FS711 1mm acrylic sealant	EI60

THE CONTENTS OF THE DRAWING
 Linear joint or gap seal, horizontally orientated
 in a rigid floor construction

DESIGNER
 REV

Nullifire has provided this specification on the basis of the data and information given to Nullifire by the customer, the Nullifire product information and level of technical knowledge this specification relates to is expected to provide the level of fire performance, should the proposed detail be subjected to the standardised fire resistance performance against which the judgment has been made.

- The accuracy of this specification relies on the following:
1. Only Nullifire products as defined in the specification are used.
 2. The specific products are installed by a competent person, utilising Nullifire installation manual and data sheets noting limitations.
 3. The proposed specification has been checked by the user.
 4. For Details on CE Marked Products Refer to the CE Technical Data Sheets.

SEAL OF APPROVAL MUST BE VERIFIED IF THIS DOCUMENT HAS BEEN MODIFIED

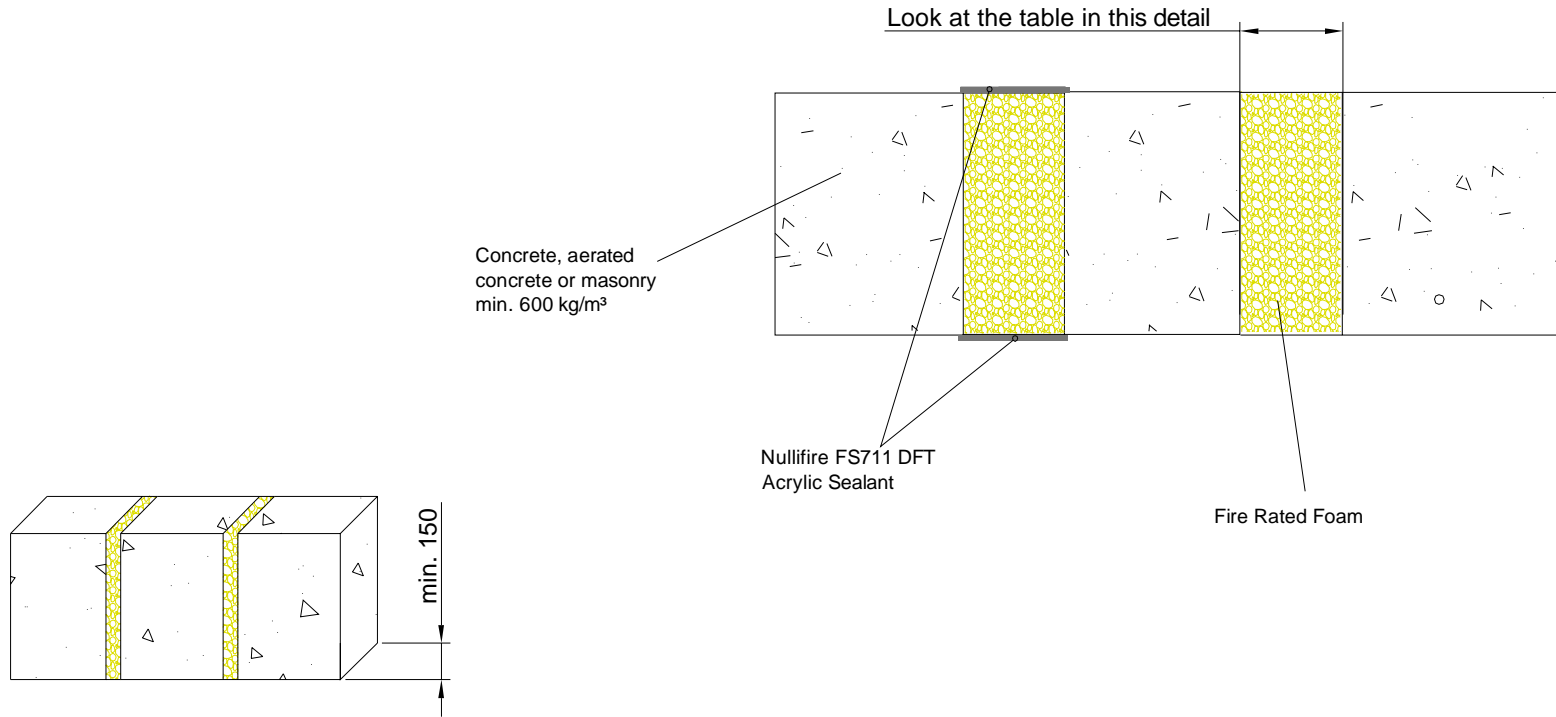
DATE
 13.11.2018

SCALE
 Not scaled

DETAIL MARK
FF-SAL1



**Nullifire
FF-SAS1**
Wall thickness min. 150 mm



APPROVAL:

ETA 15/0172
Nullifire FF170 foam
Nullifire FF177 foam
Nullifire FF197 foam

ETA 14/0113
Nullifire FS711
acrylic sealant

FF-SAS1
Fire class; Look at the table
in this detail

Technical installation instructions need to be followed installing the products.

Linear joint or gap seal, vertically orientated

Subrates	Foam depth x gap width	Coating	Fire class
Concrete-Concrete	150 mm x max. 5 mm	-	EI240
Concrete-Concrete	150 mm x max. 30 mm	-	EI90
Concrete-Concrete	150 mm x max. 40 mm	-	EI60
Concrete-Concrete	150 mm x max. 20 mm	Nullifire FS711 1mm acrylic sealant	EI240

THE CONTENTS OF THE DRAWING
Linear joint or gap seal, vertically orientated in a rigid wall construction

DESIGNER

REV

DATE
13.11.2018

SCALE
Not scaled

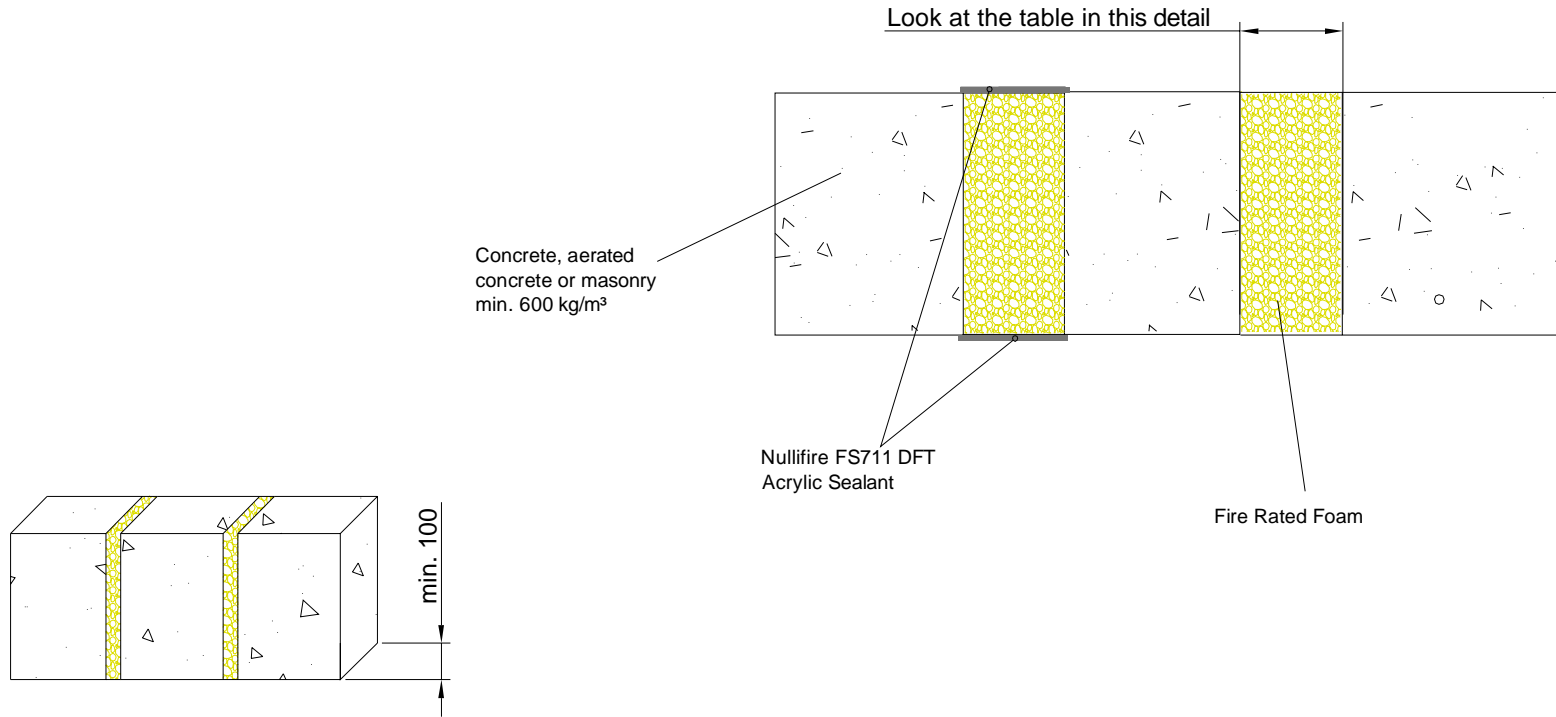
DETAIL MARK
FF-SAS1

Nullifire has provided this specification on the basis of the data and information given to Nullifire by the customer, the Nullifire product information and level of technical knowledge this specification relates to is expected to provide the level of fire performance, should the proposed detail be subjected to the standardised fire resistance performance against which the judgment has been made.

- The accuracy of this specification relies on the following:
1. Only Nullifire products as defined in the specification are used.
 2. The specific products are installed by a competent person, utilising Nullifire installation manual and data sheets noting limitations.
 3. The proposed specification has been checked by the user.
 4. For Details on CE Marked Products Refer to the CE Technical Data Sheets.

SEAL OF APPROVAL MUST BE VERIFIED IF THIS DOCUMENT HAS BEEN MODIFIED

Nullifire
FF-SAS2
Wall thickness min. 100 mm



APPROVAL:

ETA 15/0172
 Nullifire FF170 foam
 Nullifire FF177 foam
 Nullifire FF197 foam

ETA 14/0113
 Nullifire FS711
 acrylic sealant

FF-SAS2
 Fire class; Look at the table
 in this detail

Technical installation instructions need to be followed installing the products.

Linear joint or gap seal, vertically orientated

Subrates	Foam depth x gap width	Coating	Fire class
Concrete-Concrete	100 mm x max. 5 mm	-	EI180
Concrete-Concrete	100 mm x max. 30 mm	-	EI45
Concrete-Concrete	100 mm x max. 5 mm	1 mm Nullifire FS711 to both faces	EI180

THE CONTENTS OF THE DRAWING

Linear joint or gap seal, vertically orientated in a minimum 100 mm rigid wall construction

DESIGNER

REV

DATE

13.11.2018

SCALE

Not scaled

DETAIL MARK

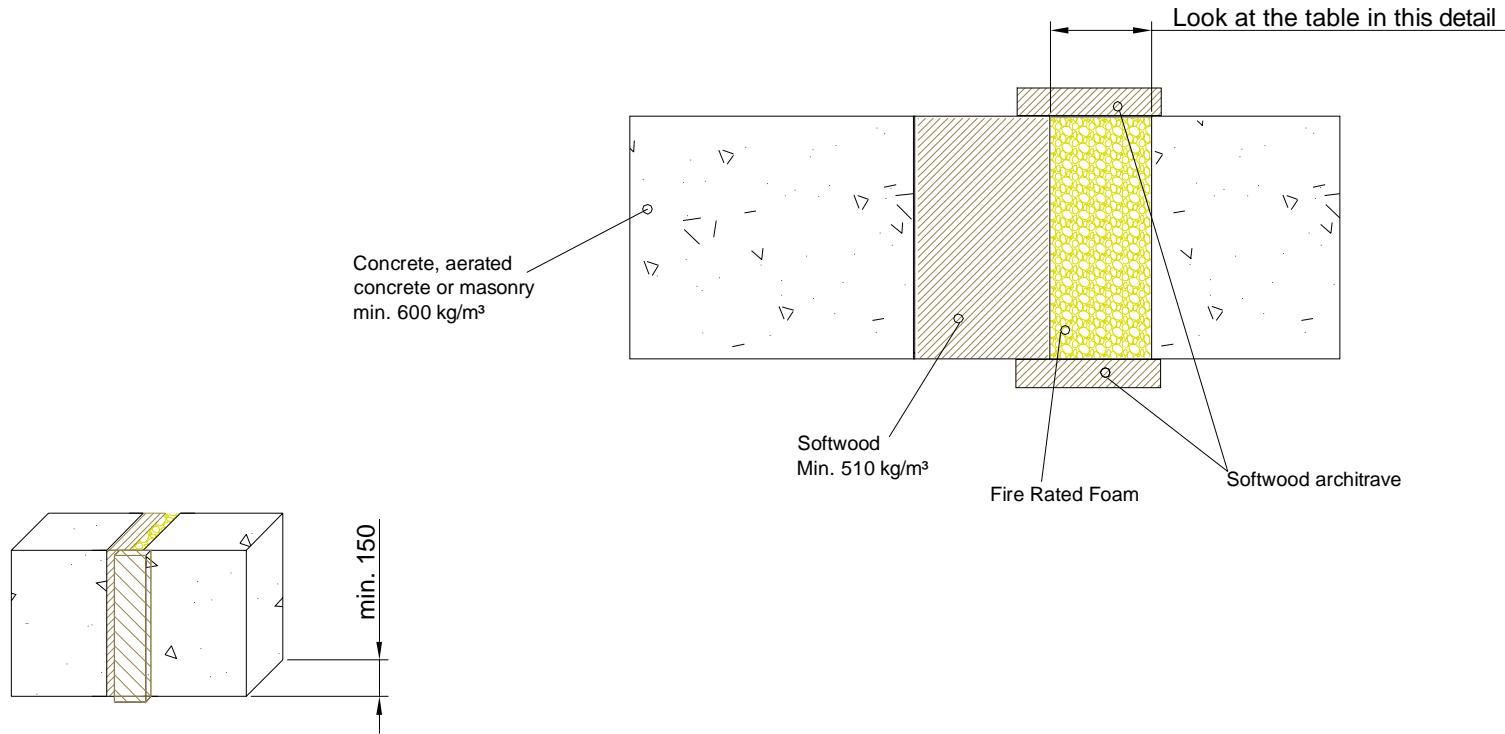
FF-SAS2

Nullifire has provided this specification on the basis of the data and information given to Nullifire by the customer, the Nullifire product information and level of technical knowledge this specification relates to is expected to provide the level of fire performance, should the proposed detail be subjected to the standardised fire resistance performance against which the judgment has been made.

- The accuracy of this specification relies on the following:
1. Only Nullifire products as defined in the specification are used.
 2. The specific products are installed by a competent person, utilising Nullifire installation manual and data sheets noting limitations.
 3. The proposed specification has been checked by the user.
 4. For Details on CE Marked Products Refer to the CE Technical Data Sheets.

SEAL OF APPROVAL MUST BE VERIFIED IF THIS DOCUMENT HAS BEEN MODIFIED

Nullifire
FF-SAS3



APPROVAL:

ETA 15/0172

Nullifire FF170 foam

Nullifire FF177 foam

Nullifire FF197 foam

FF-SAS3

Fire class; Look at the table in this detail

Technical installation instructions need to be followed installing the products.

Linear joint or gap seal, vertically orientated

Subrates	Foam depth x gap width	Coating	Fire class
Concrete-Softwood	150 mm x max. 10 mm	-	EI180
Concrete-Softwood	150 mm x max. 30 mm	- / Softwood Architrave both faces 50 mm wide x 15 mm thick	EI180

THE CONTENTS OF THE DRAWING

Linear joint or gap seal, vertically orientated in a minimum 100 mm rigid wall construction

DESIGNER

REV

DATE

13.11.2018

SCALE

Not scaled

DETAIL MARK

FF-SAS3

Nullifire has provided this specification on the basis of the data and information given to Nullifire by the customer, the Nullifire product information and level of technical knowledge this specification relates to is expected to provide the level of fire performance, should the proposed detail be subjected to the standardised fire resistance performance against which the judgment has been made.

- The accuracy of this specification relies on the following:
1. Only Nullifire products as defined in the specification are used.
 2. The specific products are installed by a competent person, utilising Nullifire installation manual and data sheets noting limitations.
 3. The proposed specification has been checked by the user.
 4. For Details on CE Marked Products Refer to the CE Technical Data Sheets.

SEAL OF APPROVAL MUST BE VERIFIED IF THIS DOCUMENT HAS BEEN MODIFIED

Nullifire